

# HUMAN SERVICES DEPARTMENT

## Resource Book



GTB Human Services put together this Resource Book for **Tribal Members and Their Descendants, who may need it.**

*Note: This resource book is a tool to find assistance in your community, it is not a guarantee of services, and is not all-encompassing of all services in the six-county service area.*

**Prepared:**

October 2023



# FOOD PANTRIES

- Acme Christian Thrift Store & Food Pantry (231) 938-2990
- Advent Lutheran Church (231) 275-8031
- Bellaire Food Pantry (231) 533-8600
- Benzie Area Christian Neighbors (231) 882-9544
- Benzie Food Partners Food Pantry (231) 325-2936
- Buckley Food Pantry (231) 342-2466
- Central Lake Community Food Pantry (231) 544-6878
- Christ Church of Traverse City (231) 946-9451
- Community Lighthouse (231) 587-9967
- Community Spirit Food Source (231) 352-6833
- ECHO His Love (231) 723-6613
- Elk Rapids Community Cupboard (231) 264-9828
- Empire Area Food Pantry (231) 735-6085
- Father Fred Foundation (231) 947-2055
- First Congregational Church (231) 947-6698
- Fresh Winds Christian Community Food Pantry (231) 325-3044
- Good Samaritan Food Pantry Ellsworth (231) 588-2208
- Grace Episcopal Church (231) 947-2330





- Immaculate Conception Church (231) 946-4211  
*Ext: 640*
- Kandu Island Food Pantry (231) 932-1590
- Kingsley Baptist Church (231) 263-5650
- Kingsley United Methodist Church (231) 263-5278
- Lake Ann United Methodist Church (231) 275-7236
- Love Thy Neighbor (231) 941-5683
- Mancelona Food Pantry (231) 587-9606
- Manna Food Project (231) 347-8852
- Northwest Michigan Community Action Agency (231) 947-3780
- PrayerFyre Food Pantry (231) 218-7191
- Redeemer Lutheran of Interlochen (231) 276-6372
- Salvation Army (231) 946-4644
- Seventh Day Adventist (231) 947-8111
- St. Patrick Catholic Church Food Pantry (231) 943-4633
- Star Township Fire Department Pantry (231) 357-3353
- Step Up Northern Michigan (989) 619-3657
- Trinity Lutheran Church (231) 946-2720

# HOT OR PREPARED MEALS

- 5 Loaves 2 Fish Northern Michigan (231) 866-6073
- Bayview Wesleyan Church (231) 947-0109
- Central United Methodist Church (231) 946-5191
- Christ Church of Traverse City (231) 946-9451
- Church of the Nazarene (231) 947-5445
- Faith Reformed Church (231) 947-7082
- Glen Lake Community Schools (231) 334-3061
- Grace Episcopal Church (231) 947-2330
- J&S Hamburg on S. Airport (231) 941-8844
- Jubilee House (231) 947-3305
- Leland Public Schools (231) 256-9857
- Mancelona United Methodist (231) 587-8461
- Northport Public Schools (231) 386-5153
- Salvation Army (231) 946-4644
- Suttons Bay Public Schools (231) 271-8600
- Traverse House Clubhouse (231) 922-2060
- Trinity Lutheran Church (231) 946-2720







# HYGIENE PANTRY

- Benzie Area Christian Neighbors (Lice Kits) (231) 882-9544
- ECHO His Love (231) 723-6613
- Love Thy Neighbor (231) 941-5683

# HOME FURNISHINGS ASSISTANCE

- ECHO His Love (231) 723-6613
- Father Fred Foundation (231) 947-2055
- Habitat for Humanity GTR Restore (231) 944-1182

# BUDGET CLASSES

- Love Thy Neighbor (231) 941-5683
- Northwest Michigan Community Action Agency (231) 947-3780

# CLOTHING ASSISTANCE

- Benzie Area Christian Neighbors (231) 882-9544
- ECHO His Love (231) 723-6613
- Father Fred Foundation (231) 947-2055
- Goodwill Industries (231) 922-4826
- Women's Resource Center (231) 946-4180

# BABY PANTRIES

- Advent Lutheran Church (231) 275-8031
- Antrim Baby Pantry (231) 492-7426
- Bethlehem Lutheran Church (231) 947-9880
- ECHO His Love (231) 723-6613
- Grand Traverse Baby Pantry (231) 947-9880
- Love They Neighbor (231) 941-5683
- Moms and Tots Center Ellsworth (231) 588-2200
- Redeemer Lutheran of Interlochen (231) 276-6372
- St- Philip's Episcopal Church (231) 882-4506
- West Bay Baby Pantry (231) 946-7947
- Women Infant and Children (**WIC**) (231) 995-6112
- Women's Resource Center (231) 941-1210

# CRIB MINISTRY

- Love Thy Neighbor (231) 941-5683

# PARENTING CLASSES

- ECHO His Love (231) 723-6613
- Head Start (231) 409-9534
- Love Thy Neighbor (231) 941-5683
- MSU Extension (231) 526-9888
- Parent Help Line (855) 427-2736
- Traverse Bay Advocacy Center (231) 929-4250



# HOUSING ASSISTANCE & INFO

- Fair Housing of West Michigan (616) 451-2980
- Goodwill Inn (231) 922-4890
- Goodwill Street Outreach (231) 995-7721
- Habitat for Humanity (231) 944-1182
- Homeless Continuum of Care (248) 269-1335
- HomeStretch Nonprofit Housing Corporation (231) 947-6001
- Jubilee House (231) 947-3305
- MSHDA Rental Assistance (517) 335-9953
- Northwest Michigan Community Action Agency (231) 947-3780
- Northwest Michigan Supportive Housing (231) 929-1309
- Pete's Place (231) 922-4800
- Safe Harbor of Grand Traverse (844) 900-0500
- Traverse City Housing Commission (231) 922-4915
- Women's Resource Center (231) 941-1210
- United States Rural Development (800) 944-8119



## LAUNDRY SERVICE

- Northwest Michigan Community Action Agency  
(231) 947-3780

# SENIORS ASSISTANCE & INFORMATION

- Area of Agency on Aging of Northwest Michigan (231) 947-8920
- Benzie Senior Resource (231) 525-0600
- Catholic Human Services (231) 947-8110
- Charlevoix County Commission on Aging (231) 237-0103
- Elk Rapids Senior Center (231) 264-6490
- Grand Traverse Commission on Aging (231) 922-4688
- Mancelona Twp Senior Center (231) 587-9131
- PACE North (833) 410-2086
- Senior Center Network (231) 922-4911
- Senior Companions (231) 929-7070
- Wellspring Lutheran Services (231) 943-4348



# DRUG/ALCOHOL TREATMENT

- Addiction Treatment Services (**ATS**) (231) 201-5693
- Al-Anon/Ala-Teen (231) 938-7399
- Alcoholics Anonymous (231) 946-8823
- Catholic Human Services (231) 947-8110
- Munson Behavioral Health (800) 662-6766
- Narcotics Anonymous (800) 230-4085
- National Rehab Hotline (866) 210-1303
- NMSAS Recovery Center (989) 732-1791
- Northern Michigan Regional Entity Access Center (800) 834-3393
- Pine Rest Christian Mental Health Services (231) 947-2255  
(**Traverse City Clinic**)
- State of Michigan Department of Health & Human Services (231) 941-3900
- Traverse Health Clinic (231) 935-0799



# COUNSELING RESOURCES

- Benzie Behavioral Health (231) 882-5514
- Catholic Charities West Michigan Services (231) 346-5250
- Catholic Human Services (231) 947-8110
- Centra Michigan Community Mental Health (877) 398-2013  
**(Benzie & Manistee)**
- Child and Family Services of Northwestern Michigan (231) 946-8975
- Munson Behavioral Health (800) 662-6766
- North Country Community Mental Health (231) 547-5885  
**(Antrim & Charlevoix)**
- Northern Lakes Community Mental Health (231) 922-4850  
**(Leelanau & TC)**
- Pine Rest Christian Mental Health Services (231) 947-2255  
**(Traverse City Clinic)** Ext: 1033
- Traverse Bay Children's Advocacy Center (231) 929-4250
- Traverse Health Clinic (231) 935-0799
- Wedgewood Christian Counseling (616) 942-2100
- Wellspring Lutheran Services (231) 943-4348
- Women's Resource Center (231) 941-1210



# CRISIS RESOURCES

- American Red Cross (877) 326-6105
- Benize-Leelanau District Health Department (231) 256-0200
- Catholic Charities West Michigan Services (616) 456-1433
- Centra Michigan Community Mental Health (877) 398-2013  
**(Benzie & Manistee)**
- Child Abuse and Neglect Hotline (855) 444-3911
- Child and Family Services (231) 946-8975  
of Northwestern Michigan
- Disability Network of Northern Michigan (231) 922-0903
- Disability Rights Michigan (517) 487-1755
- Emergency Line 9-1-1 911
- Michigan Domestic Violence Hotline (800) 799-7233
- National Domestic Violence Hotline (800) 799-7233
- National Human Trafficking Hotline (888) 373-7888
- National Suicide Prevention Hotline 988
- North Country Community Mental Health (231) 547-5885  
**(Antrim & Charlevoix)**
- Northern Lakes Community Mental Health (231) 922-4850  
**(Leelanau & TC)**
- Parent Help Line (855) 427-2736
- Traverse Bay Children's Advocacy Center (231) 929-4250
- Violence Prevention Program (CDC) (800) 232-4636
- Wellspring Lutheran Services (231) 943-4348
- Women's Resource Center (231) 941-1210

# FINANCIAL ASSISTANCE

- Benzie Area Christian Neighbors (231) 882-9544
- MSHDA Step Forward (866) 946-7432
- Northwest Michigan Community Action Agency (231) 947-3780
- Salvation Army (231) 946-4644
- Social Security Disability Office (800) 772-1213
- State of Michigan Department of Health & Human Services (231) 941-3900

# TAX ASSISTANCE

- Northwest Michigan Community Action Agency (231) 947-3780
- Vita Free Tax Preparation (800) 906-9887

# HEALTH RESOURCES

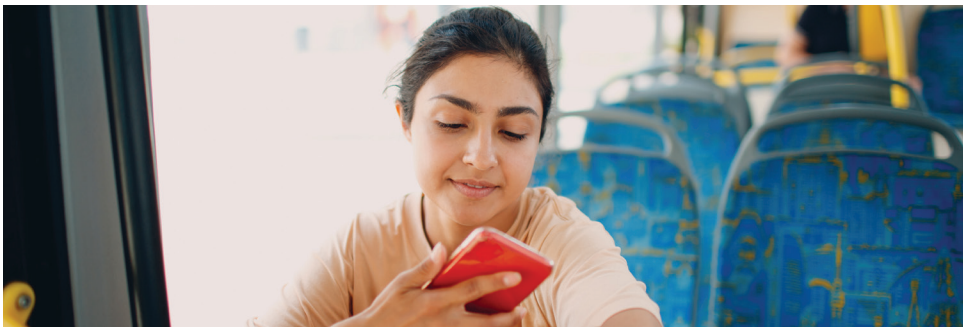
- Autism Society of Michigan (800) 223-6722
- Benzie-Leelanau District Health Department (231) 256-0200
- Dental Clinics North (866) 878-6557
- Goodwill Optical (231) 932-1520
- Grand Traverse County Health Department (231) 995-6111
- Munson Medical Center (231) 935-5000
- Northwest Michigan Health Services (231) 947-0351
- State of Michigan Department of Health & Human Services (231) 941-3900
- Teen Health and Wellness Center (877) 381-6649
- Thomas Judd Care Center (231) 935-7548
- Traverse Health Clinic (231) 935-0799
- Youth Health and Wellness Center (231) 922-6416

# LEGAL AID (NON-CRIMINAL)

- Conflict Resolution Services (231) 941-5835
- Fair Housing Center of West Michigan (616) 451-2980
- Justice for our Neighbors (231) 620-1100
- Legal Aid Clinic – Child and Family Services (800) 442-0292
- Legal Services of Northern Michigan (231) 941-0771
- Michigan Indian Legal Services (231) 947-0122
- Project Unity for Life (231) 929-4446
- Traverse Attorney Referral Services (231) 922-4713

# TRANSPORTATION

- Antrim County Dial-A-Ride (231) 533-8644
- BATA (231) 941-2324
- Benzie Transportation Authority (231) 325-3000
- Charlevoix County Transit (231) 582-6900
- Greyhound (231) 946-5180
- Health Ride (888) 654-2200
- Norte's Borrow A Bike (231) 883-2404
- Northwest Michigan Community Action Agency (231) 947-3780
- Recycle-A-Bicycle (**TART**) (231) 649-3443
- UpNorth Taxi (231) 499-0269
- Workers on Wheels Program (**WOW**) (800) 343-0174



# UTILITY ASSISTANCE

- Benzie Area Christian Neighbors (231) 882-9544
- Char-Em United Way (231) 947-3200
- ECHO His Love (231) 723-6613
- Father Fred Foundation (231) 947-2055
- Love Thy Neighbor (231) 941-5683
- Northwest Michigan Community Action Agency (231) 947-3780
- Salvation Army (231) 946-4644
- State of Michigan Department of Health & Human Services (231) 941-3900

# VETERAN SERVICES

- Goodwill Industries (231) 922-4805
- Grand Traverse County Veteran Affairs (231) 995-6070
- Reining Liberty Ranch (231) 421-3958
- VA Regional Office (800) 827-1000
- Veteran Crisis Line 988 Press 1
- Veteran's Employment Assistance Services (800) 642-4838  
(US DOL)





# YOUTH/TEENS RESOURCES & INFORMATION

- 4-H Youth Programs (231) 922-4825
- Catholic Human Services (231) 947-8110
- Child and Family Services (231) 946-8975
- Generations Ahead (231) 360-0053
- Goodwill Industries (231) 922-4805
- Great Start Collaboration of Charlevoix (877) 866-3714
- Homeless Youth & Runaway Program (877) 833-3689
- Kingsley ROCK Youth Center (231) 263-7000
- Michigan Organization on Adolescent Sexual Health (517) 318-1414
- Northwest Michigan Works (231) 929-5055
- Pete's Place (231) 922-4800
- STEP Program (231) 941-5421
- TCAPS Step Program (231) 933-1789
- Telamon Corporation (231) 941-5300
- Women Infants and Children (**WIC**) (231) 995-6112

# DISABILITY ASSISTANCE & INFORMATION

- Aging & Disability Resource Collaborative (877) 644-2233
- Area Agency on Aging of NW MI (231) 947-8920
- Bay Area Coalition for Independent Living (888) 456-2736
- Centra Wellness Network (877) 398-2013
- Community Living Center (231) 932-9030
- Disability Network of Northern Michigan (231) 922-0903
- Disability-gov (866) 487-2365
- Grand Traverse Dyslexia Association (231) 929-1007
- Lions Club (231) 362-3174
- Michigan Disability Assistance (800) 288-5923
- Networks Northwest (231) 922-6940

# CHILDCARE RESOURCES & INFORMATION

- 4-H Youth Programs (231) 922-4825
- 5 to One Neighborhood Network (231) 922-6437
- Alba Public School Preschool (231) 584-2000
- Bellaire Preschool (231) 533-8916
- Big Brothers Big Sisters of Northwestern Michigan (231) 946-2447
- Early Head Start **(NMCAA)** (231) 947-3780
- Early On Michigan (800) 327-5966
- Ebenezer Christian Preschool (231) 588-2111
- Frankfort/Elberta Elementary Preschool (231) 352-7601
- Great Start Collaborative of Charlevoix (877) 866-3714
- Head Start **(NMCAA)** (231) 947-3780
- Healthy Futures (231) 935-5640
- Lake Ann Elementary School (231) 275-7730
- Lakeland Childcare (231) 264-8289
- Mancelona Early Childhood (231) 587-9764
- Stepping Stone Children's Center in Lake Ann (231) 275-0462
- Telamon Corporation (231) 941-5300

# EMPLOYMENT ASSISTANCE

- Benzie Area Christian Neighbors (231) 882-9544
- Catholic Human Services (231) 947-8110
- Disabilities Network Northern Michigan (231) 922-0903
- Goodwill Industries (231) 922-4805
- Michigan Indian Employment and Training (517) 393-0712
- Michigan Rehabilitation Services (231) 486-6330
- Michigan Works! Agency (231) 922-3700
- Telamon Corporation (231) 941-5300
- Ticket to Work Program (866) 968-7842
- Unemployment Agency (866) 500-0017



**Contact:**

Kathy Tahtinen, MPA, CNP  
Human Services Dept. Manager  
(231) 534-7255 or (231) 631-9131

**Human Services:**

HumanServices@gtb-nsn.gov  
(231) 534-7910

**Anishinaabek Family Services:**

AFS@gtb-nsn.gov  
(231) 534-7124

**Behavioral Health Services:**

Gov-BehavioralHealth@gtb-nsn.gov  
(231) 534-7090

**Mailing Address:**

2605 N. West Bayshore Drive  
Peshawbestown, MI 49682



**Prepared By:**

GTB Communications  
with Content Provided  
from Human Services.

*\*\* This resource book is a tool to find assistance in your community, it is not a guarantee of services, and is not all-encompassing of all services in the six-county service area.*

